



InstaShow™

Plug and play for wireless Full HD presentations

- *True Plug & Play
- *No Software
- *Wireless 802.11ac
- *InstaVideo
- *Auto Channel Selection
- *Video and Audio Support
- *Assured Performance
- *Extended Desktop

Feature			
Model name	WDC10		
Product name	InstaShow™		
Color	Black		
Video outputs	HDMI 1.4, comply with HDCP		
Frame Rate	Up to 30 fps depending on environment		
Output resolution	Video Timing: 1280x720 (720P), 1920x1080 (1080p)		
	PC Timing: 800 × 600, 1024 × 768 (XGA),1280 × 768,1280x800(WXGA),1280 × 1024,1280 × 960,1360 × 768,1440 × 900,1400 × 1050,1680 × 1050		
Input resolution	Up to 1920x1080		
Simultaneous connections	16 pcs		
Audio	Stereo, Radio quality 16bits 48KHz		
Wireless	IEEE 802.11ac, 5GHz, 2T2R		
Data rate wireless	Up to 400Mbps		
Authentication protocol	WPA2 (WPA2-PSK (Pre-Shared key) / WPA2-Enterprise)		
Security (encryption)	AES 128 bit		
Support platform	Windows, MAC, Chrome. Any OS supports HDMI standard 1.4		
Reach	Max. 8m between InstaShow Button and InstaShow Host		
Temperature range	Operating: 0°C to +40°C (+32°F to +104°F)		
	Storage: -10°C to +60°C (+14°F to +140°F)		
Humidity	Storage: 5% to 90% relative humidity, non-condensing		
	Operation: 10% to 80% relative humidity, non-condensing		
InstaShow Button			
Cable	USB Type A, HDMI Cable	Power Supply	DC 5V±10%, 0.9A
Reset Button	x1	Power Consumption	Normal: 4.5W
Mode Key	x1	Dimension (WxHxD)	84.5x189.55x19.9mm
LED	*Red (boosting), Green (wifi connected), Blue (presenting)	Weight	100g
InstaShow Host			
Power Button	x1	Power Supply	DC 5V±10%, 1.5A
Pairing Key	x1		Normal: 5W
LAN	x1 (10/100 Mbps)	Power Consumption	Network standby: 2W
Video Output	x1 HDMI 1.4 (video and		HDMI standby: 0.02W
LED	*Red (boosting), Green (ready for connection), Blue (presenting)	Dimension (WxHxD) (not include rubber feet)	110x110x27mm (99mm with antenna)
DC Power Jack	x1 (micro USB)	Weight	150g
Cradle			
Dimensioin	85*97.5*170.4 mm	Weight	630g
Package			
InstaShow Button	x2	Adapter	x1
InstaShow Host	x1	Velcro Strap	x1
Cradle	x1	Quick Start Guide	x1
USB Power Cable	x1 (150cm, USB Type A 3.0, micro USB)	Safety Statement	x1
HDMI Cable	x1 (80cm)	Double-side Sponge Tap	x1
USB Extended Cable	x1 (15cm), x1 (80cm)	Rubber Feet	x4
Antenna	x2 (Black)	Screws	x4

Go to: <http://www.benq.com/product/projector/INSTASHOW-WDC10/>

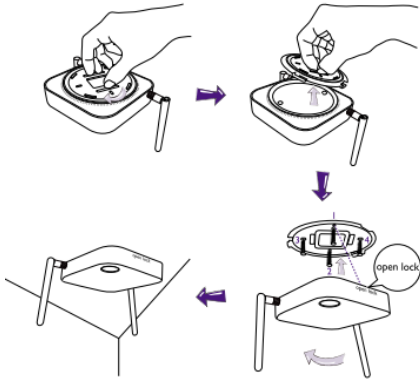
* Please find detail LED behavior in the user manual.

**Wireless connection speed is depended on wireless environment.

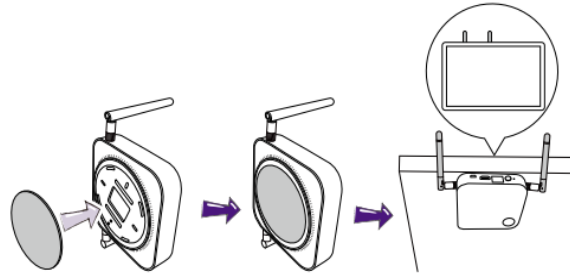
InstaShow™

Installation of InstaShow Host

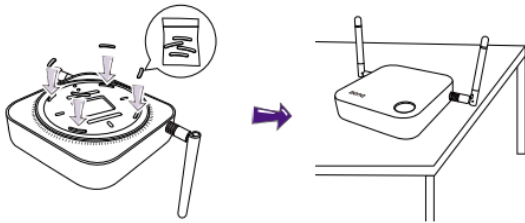
A. Attaching InstaShow Host to the ceiling



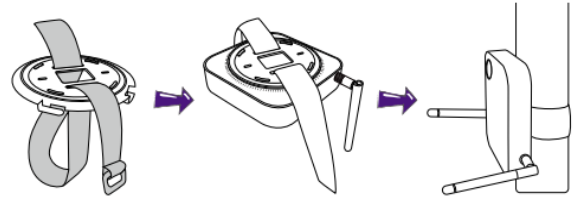
B. Attaching InstaShow Host to a display



C. Placing InstaShow Host on a table

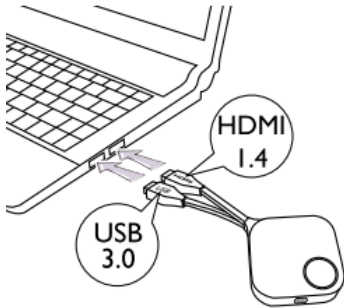


D. Attaching InstaShow Host to a ceiling mount

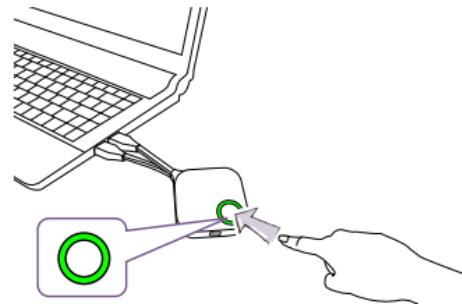


Setup InstaShow Button to Present

Step 1. Connect cable



Step 2. Push the button when LED is green



Dimension

