

GROUP

Setup guide



CAMERA

1. 10X lossless zoom
2. Camera LED
3. Kensington security slot

HUB

4. Hub LED
5. Power
6. USB
7. Camera
8. Speakerphone

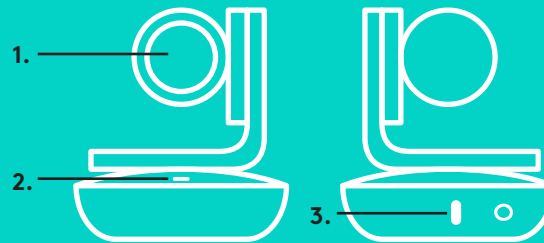
SPEAKERPHONE

9. Kensington security slot

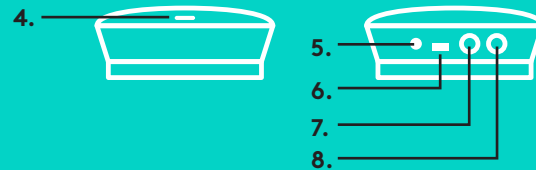
ACCESSORIES

10. Camera mount
11. Hub velcro mount
12. Cables clip
13. Cables
14. Power adapter
15. Expansion Microphones

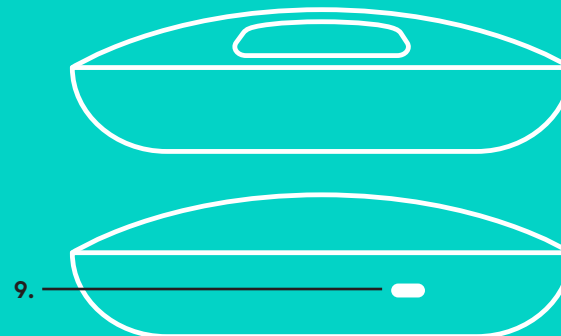
CAMERA



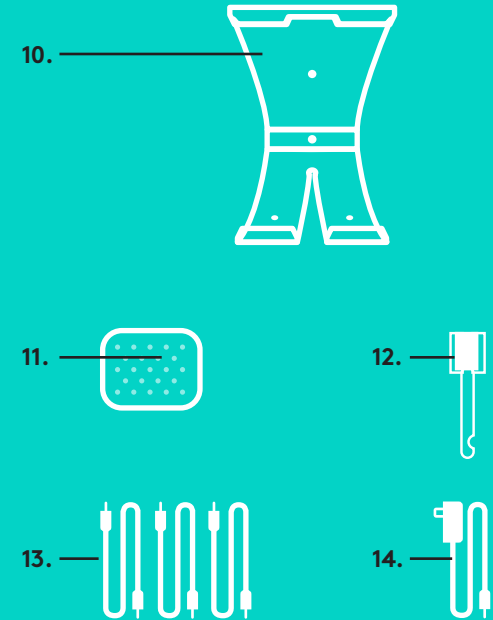
HUB



SPEAKERPHONE



ACCESSORIES



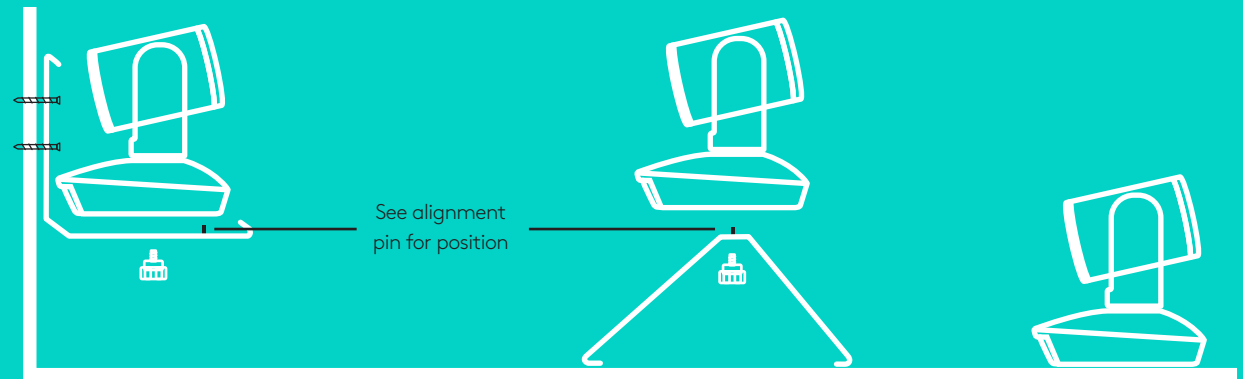
EXPANSION MICROPHONES (OPTIONAL)



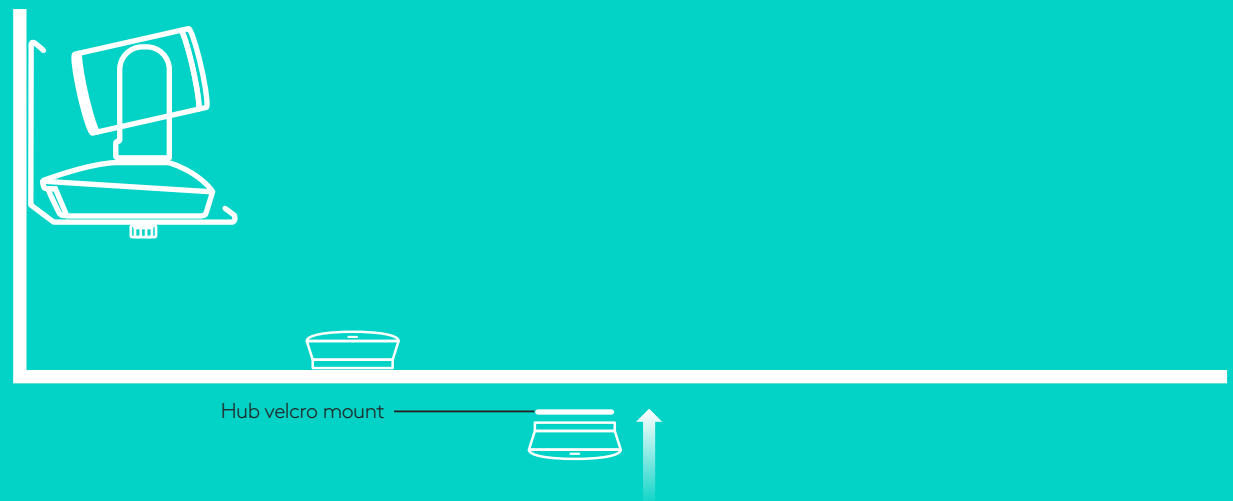
CONNECTION AND SETUP

Setup and connection to a computer

1. Set the camera on the table, or using the included camera mount on the table or a wall.



2. The hub can be placed on a table or mounted underneath using the included hook and loop pads.



INTERACTIVE
PANELS UK

CONNECTION AND SETUP

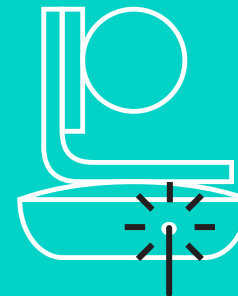
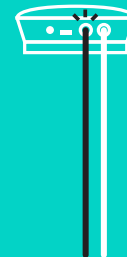
Setup and connection to a computer



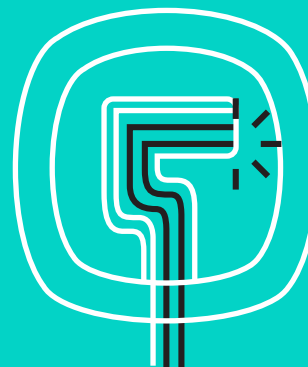
3. Connect the cable between the speakerphone and hub. Simply match the colored ends of the cables to the corresponding color marks on the speakerphone and hub.



Connect the cable between the camera and hub. Simply match the colored ends of the cables to the corresponding color marks on the camera and hub.



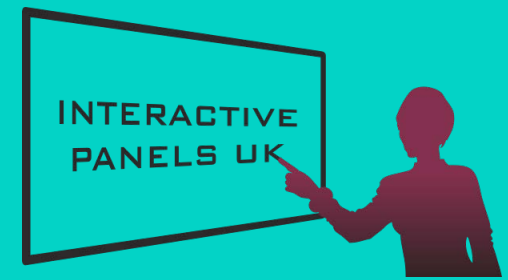
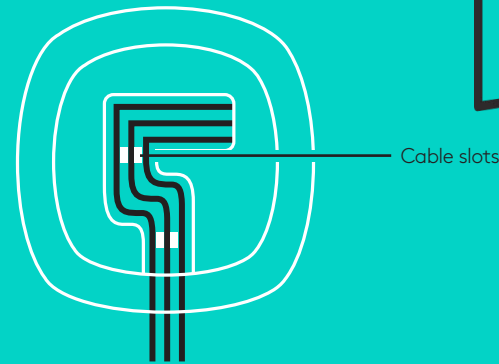
If you're using the optional Expansion Microphones, connect them to the appropriate jacks on the bottom of the speakerphone. Please use only these microphones with GROUP; use of other microphone can damage GROUP and the microphones and may void the warranty.



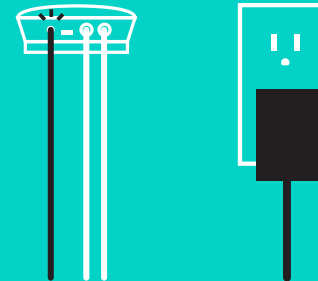
CONNECTION AND SETUP

Setup and connection to a computer

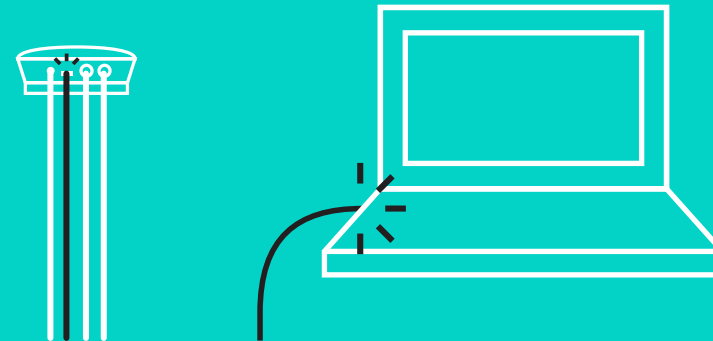
Press the cables into the slots on the bottom of the speakerphone.



Connect the power cable to the hub and plug in the power adapter. The display on the speakerphone will turn on and show the Logitech logo when powered.



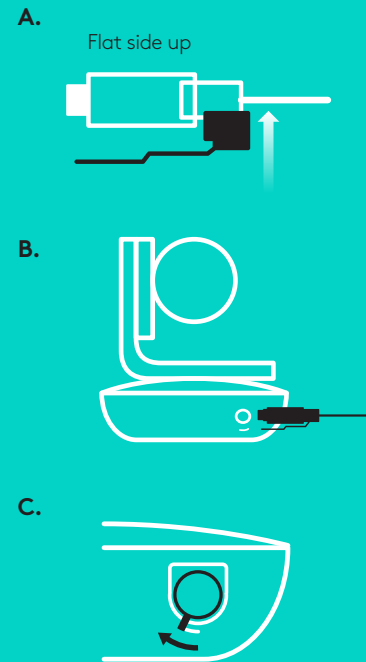
4. Connect the hub to a USB port on your computer. The speakerphone display will also prompt you to make this connection. The camera and the Activity light will flash to show that connection is taking place, and when completed, the camera head will rotate and the speakerphone will play a sound. If these activities do not take place, try again and then consult Troubleshooting or contact technical support.



CONNECTION AND SETUP

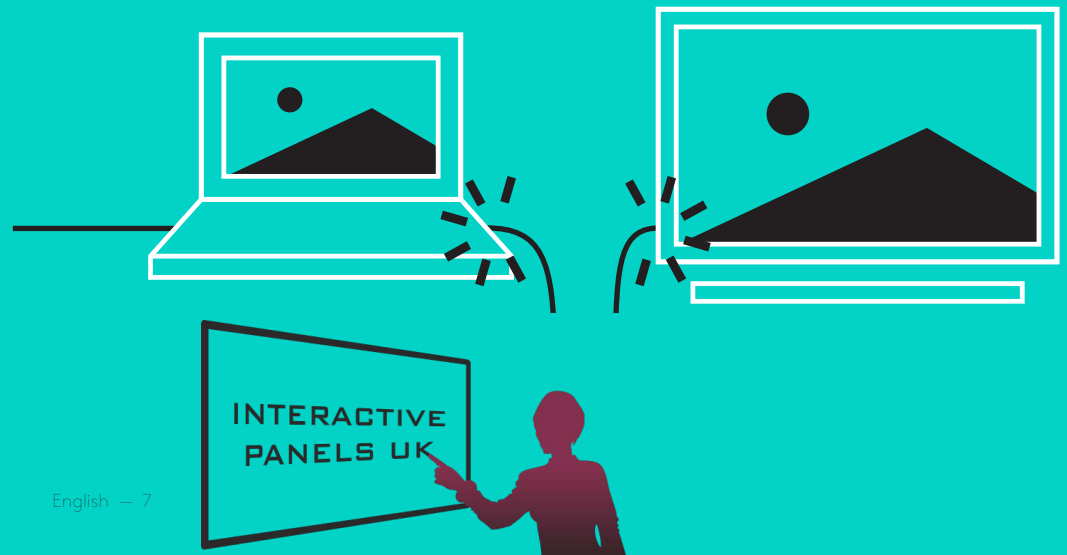
Setup and connection to a computer

5. Attaching cable lock
 - Attach Cable Lock to cable end that connects to the camera.
 - Plug Cable Lock into the slot of the housing of the camera.
 - Rotate the Cable Lock clockwise to lock the cable.



6. Optional: connect computer to external display such as a television, monitor or projector.

Note regarding longer cables: GROUP includes 5m/16' cables to connect the speakerphone and camera to the hub. Extending this length while maintaining picture quality requires amplified cables. Please see the Complimentary Solutions page at www.logitech.com/LCP-compsolutions for options.



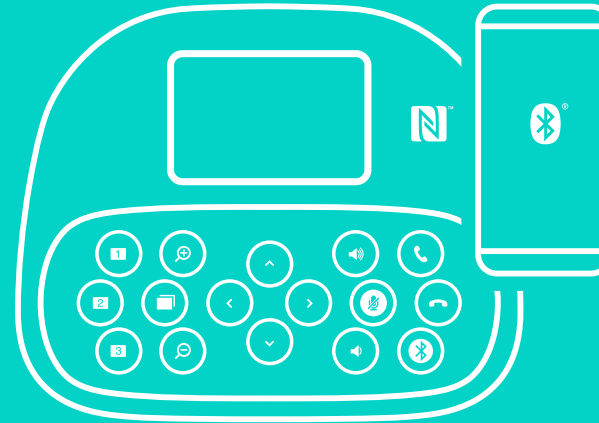
CONNECTING TO *BLUETOOTH*® DEVICE

To connect GROUP to your mobile device:

- If your device is NFC enabled, touch the mobile device to the NFC icon on the speakerphone, which should enable *Bluetooth* acceptance on the mobile device OR
- Hold down the *Bluetooth* button until the Activity light on the speaker-phone starts blinking blue rapidly. Follow the instructions on your mobile device to pair with *Bluetooth*.

Note: When GROUP is paired and connected, the *Bluetooth* icon on the speakerphone will appear bright. When paired but not connected, it will be greyed out.

GROUP cannot pair to *Bluetooth* while streaming to USB. If an attempt is made to pair to a mobile device while in a USB call, an error beep will sound. Please wait until the USB call is complete before pairing your mobile device.



USING LOGITECH GROUP

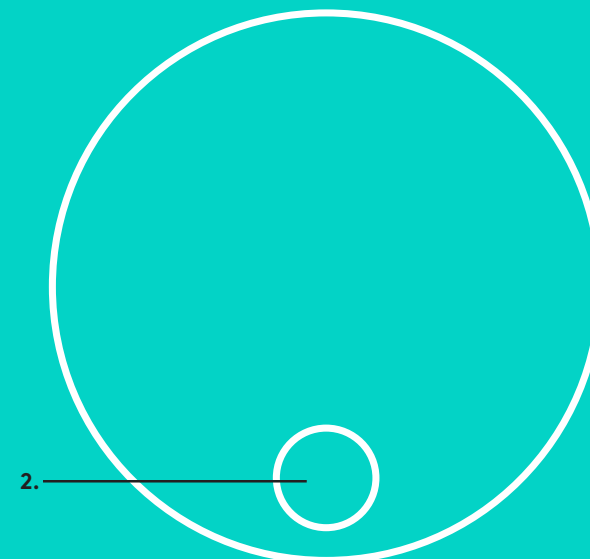
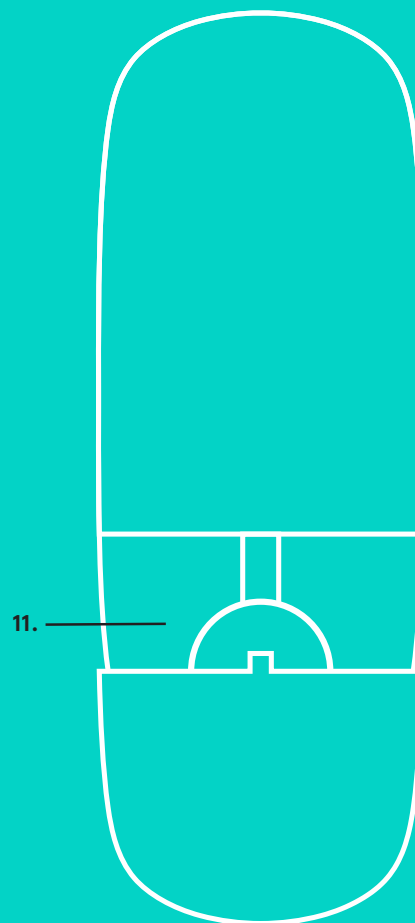
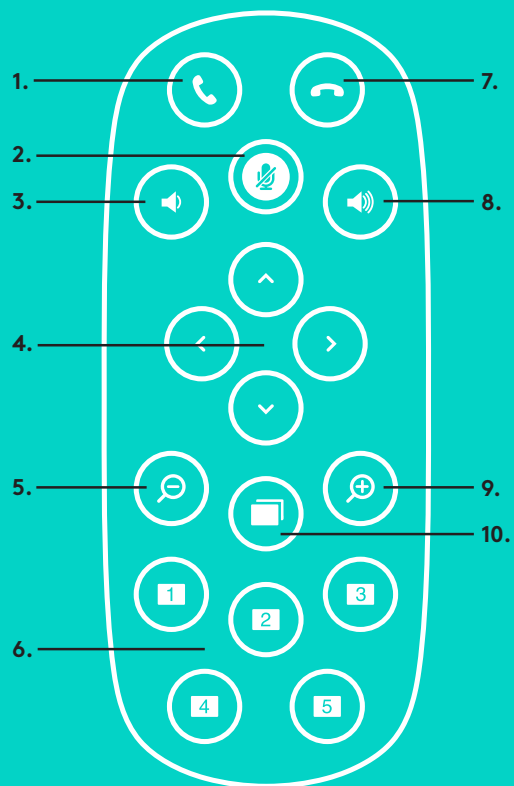
Video and audio

- Ensure GROUP is selected as the microphone, speaker and camera in your video application.
- Simply start a call in your video application to use GROUP for HD video and high quality audio. The Activity light will be blue when video is streaming.

Audio only with *Bluetooth*

- Ensure GROUP is paired and connected to your mobile device as outlined in Connection and Setup. Place a call on your mobile device and enjoy the improved audio experience via the GROUP speakerphone.

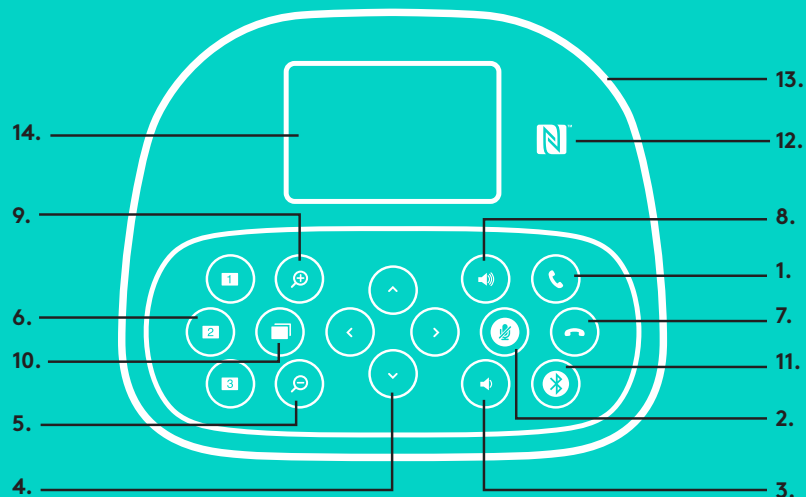




REMOTE and EXPANSION MICROPHONES

- | | |
|--------------------|---------------------------------|
| 1. Call answer | 8. Volume up |
| 2. Microphone mute | 9. Camera zoom in |
| 3. Volume down | 10. Near/Far camera control |
| 4. Camera pan/tilt | 11. Remote battery door. |
| 5. Camera zoom out | The GROUP remote control |
| 6. Camera presets | runs on a Li-ion CR2032 |
| 7. Call end | battery. Battery life will vary |
| | based on usage. |





SPEAKERPHONE

1. Answers incoming calls in supported applications.
 - Note: Call Answer and End buttons may not work in some applications so simply use your video application to answer and end calls. To enable answer and end buttons for Skype or Cisco Jabber, please download the respective plug-ins available from www.logitech.com/support/group.
2. Mutes the microphones.
3. Decreases the speaker volume.
4. Pans and tilts the camera. Press once for incremental or press and hold for continuous pan or tilt.
Caution: Do not manually rotate the camera as doing so may cause damage.
5. Zooms the camera out.
6. Camera Presets: GROUP has 5 camera presets (1 through 3 are on both the remote and the speakerphone and 4 & 5 are on the remote) that allow you to position the camera at a preset location with a push of a button. To set the camera preset, move the camera to the desired location and then press and hold the Camera Preset button until the associated icon shows on the display and a beep plays to confirm the setting.
7. Ends the current call in supported applications.
8. Increases the speaker volume.
9. Zooms the camera in up to 10x.
10. Near/Far camera control: In supported applications this button allows you to control the pan, tilt and zoom of a remote GROUP, ConferenceCam CC3000e or a ConferenceCam BCC950. Some applications support this feature natively, others can be enabled by using an application that can be downloaded from www.logitech.com/support/group. Please visit the download page listed for more information.
11. *Bluetooth* pairing button. Please see Connection and Setup section for more information.
12. NFC antenna location. Place your NFC enabled mobile device here to initiate *Bluetooth* pairing.
13. Speakerphone Activity light indications:
 - Blue — GROUP is in active call.
 - Blinking blue — incoming call.
 - Blinking blue light in call — Call has been put on hold (via hold function in application)
 - Rapid blinking blue — in *Bluetooth* pairing mode.
 - Speakerphone blue activity light may not function in some applications.
 - Red — Audio is muted.
14. Display will show call activity as well as volume and connectivity status.
15. Kensington Security Slot for securing the speakerphone and camera.

VISIT PRODUCT CENTRAL

Discover your product's full potential.

Get valuable information and usage tips by browsing easy-to-use FAQs. Find answers to product questions and get help setting up your product. See if there's software available for download that can enhance your product experience. To enjoy all the benefits of your Logitech product, visit www.logitech.com/support/group and take advantage of Logitech's wide range of useful support services:

- Product information
- Tutorials
- Troubleshooting
- Diagnostics
- Firmware upgrades
- Support community
- Software downloads
- In-box documentation
- Warranty information
- Spare parts

Troubleshooting tips

Please visit www.logitech.com/support/group for troubleshooting tips, information on software tools and for a diagnostic tool to help troubleshoot issues you may have with GROUP.





logitech®

www.logitech.com

© 2016 Logitech. Logitech, Logi and other Logitech marks are owned by Logitech and may be registered. The *Bluetooth®* word mark and logos are registered trademarks owned by *Bluetooth SIG, Inc.* and any use of such marks by Logitech is under license. The 'N' Mark is a trademark or registered trademark of *NFC Forum, Inc.* All other trademarks are the property of their respective owners. Logitech assumes no responsibility for any errors that may appear in this manual. Information contained herein is subject to change without notice.

621-000725.002